



# INCIDENT COMMAND SYSTEM

Hazardous Materials

LESSON ICS-361-6  
Hazardous Materials  
Refuge Area Manager

---

<b>TOPIC:</b>	HAZARDOUS MATERIALS REFUGE AREA MANAGER
<b>TIME FRAME:</b>	15 Minutes
<b>LEVEL OF INSTRUCTION:</b>	Level I
<b>BEHAVIORAL OBJECTIVE:</b>	
• <i>Condition:</i>	Given a written examination
• <i>Behavior:</i>	The student will recognize the roles and responsibilities of the Hazardous Materials Refuge Area Manager
• <i>Standard:</i>	With a minimum 80% accuracy according to the information in the Incident Command System Hazardous Materials Module
<b>MATERIALS NEEDED:</b>	Hazardous Materials Group Organization Chart, Control Zone Layout Chart, Lesson plan ICS 361-6, dry erase board and pens, written quiz
<b>REFERENCES:</b>	ICS 361-6 Lesson Plan and ICS 1106 position manual for the Refuge Area Manager, Field Operations Guide (FOG)
<b>PREPARATION:</b>	<p>The Hazardous Materials Refuge Area Manager must have a thorough working knowledge of the duties and responsibilities of the position. There may already be victims identified as having been contaminated or needing to be interviewed to determine if they have information about the emergency situation. Your job is to manage the Refuge Area by triaging victims to the decontamination corridor or to the Safe Refuge Area.</p> <p>You will be given a written quiz at the end of this lesson. The performance standard for this quiz will be 80% Correct.</p>



# INCIDENT COMMAND SYSTEM

Hazardous Materials

LESSON ICS-361-6  
 Hazardous Materials  
 Refuge Area Manager

PRESENTATION	APPLICATION
<p>I. ORGANIZATION</p> <p>A. Refuge Area Manager assigned to</p> <ol style="list-style-type: none"> <li>1. Site Access Control Leader</li> </ol> <p>B. Reports to</p> <ol style="list-style-type: none"> <li>1. Site Access Control Leader</li> </ol> <p>C. Coordinates with</p> <ol style="list-style-type: none"> <li>1. Decontamination Leader</li> <li>2. Entry Leader</li> </ol> <p>D. Responsible for</p> <ol style="list-style-type: none"> <li>1. Evaluating and prioritizing victims for           <ol style="list-style-type: none"> <li>a) Decontamination</li> <li>b) Medical treatment</li> </ol> </li> </ol> <p>E. Located</p> <ol style="list-style-type: none"> <li>1. Separate from the Safe Refuge Area</li> <li>2. Within the Exclusion Zone</li> </ol> <p>II. PERSONNEL</p> <p>A. Refuge Area Manager</p> <ol style="list-style-type: none"> <li>1. Part of the Site Access Control Team</li> <li>2. Responsible for           <ol style="list-style-type: none"> <li>a) Evaluating victims</li> <li>b) Prioritizing victims for treatment</li> </ol> </li> <li>3. Prevent the spread of contamination</li> </ol> <p>B. Requirements</p> <ol style="list-style-type: none"> <li>1. Trained to federal, state and local laws</li> </ol> <p>III. MAJOR RESPONSIBILITIES AND PROCEDURES</p> <p>A. Review Common Responsibilities, FOG (Page 1-2)</p> <p>B. Check in and obtain a briefing from the site access control leader</p>	<p>Show ICS Organization Chart</p> <p>Identify where the refuge area manager should operate from</p> <p>Discuss the Incident Briefing form ICS Form 201</p>



# INCIDENT COMMAND SYSTEM

Hazardous Materials

LESSON ICS-361-6  
Hazardous Materials  
Refuge Area Manager

<ol style="list-style-type: none"> <li>1. Complete Check in list (ICS Form 201).</li> <li>2. If reporting directly to assignment             <ol style="list-style-type: none"> <li>a) Check in via radio</li> </ol> </li> <li>3. Request and receive briefing to include             <ol style="list-style-type: none"> <li>a) Incident briefing form ICS 201 or</li> <li>b) Information verbally</li> <li>c) Request assignment instructions</li> </ol> </li> <li>4. Obtain incident action plan (ICS Form 202)</li> <li>5. Start Unit/Activity Log (ICS Form 214)</li> </ol> <p>C. Establish the Refuge Area</p> <ol style="list-style-type: none"> <li>1. Coordinate location with             <ol style="list-style-type: none"> <li>a) Decontamination Leader</li> </ol> </li> <li>2. Coordinate Refuge Area Layout             <ol style="list-style-type: none"> <li>a) With the Entry Team Leader                 <ol style="list-style-type: none"> <li>(1) To expedite movement of victims</li> <li>(2) Comply with the incident traffic plan</li> </ol> </li> </ol> </li> <li>3. Determine resource needs             <ol style="list-style-type: none"> <li>a) Need for personnel and equipment</li> <li>b) Requests through                 <ol style="list-style-type: none"> <li>(1) Site Access Control Leader</li> </ol> </li> </ol> </li> <li>4. Post the area for identification</li> </ol> <p>D. Monitor the hazardous material release</p> <ol style="list-style-type: none"> <li>1. Ensure Refuge Area is not subject to exposure</li> <li>2. Communicate with             <ol style="list-style-type: none"> <li>a) Assistant Safety Officer – HM</li> <li>b) Safe Refuge Area Manager</li> </ol> </li> </ol> <p>E. Assist Site Access Control Leader</p> <ol style="list-style-type: none"> <li>1. Evaluate victims for contamination</li> </ol>	<p>Discuss the Incident Action Plan ICS Form 202</p> <p>Discus the Unit Activity Log ICS Form 214</p>
---	---



# INCIDENT COMMAND SYSTEM

Hazardous Materials

LESSON ICS-361-6  
Hazardous Materials  
Refuge Area Manager

<p>F. Manage Refuge Area</p> <ol style="list-style-type: none"><li>1. Evaluate victims for contamination<ol style="list-style-type: none"><li>a) Consider secondary contamination to EMS equipment and personnel</li><li>b) Victims must be decontaminated prior to leaving the incident</li></ol></li><li>2. Coordinate with the Decontamination Leader<ol style="list-style-type: none"><li>a) Prioritize victims for decontamination</li></ol></li><li>3. Collect information from witnesses<ol style="list-style-type: none"><li>a) Communicate the information to the Haz Mat Group Supervisor<ol style="list-style-type: none"><li>(1) Through the Site Access Control Leader</li></ol></li></ol></li></ol> <p>G. Coordinate with the Entry Leader for movement of victims from the</p> <ol style="list-style-type: none"><li>1. From the Refuge Area in the Exclusion Zone to the Safe Refuge Area in the Contamination Reduction Zone</li><li>2. Triage victims<ol style="list-style-type: none"><li>a) Prior to movement into the SRA<ol style="list-style-type: none"><li>(1) Medical condition</li><li>(2) Contamination</li></ol></li></ol></li></ol> <p>H. Communicate with the Decontamination Leader for movement of victims from the</p> <ol style="list-style-type: none"><li>1. Safe Refuge Area to the Decontamination Corridor<ol style="list-style-type: none"><li>a) Triage victims for immediate decontamination</li></ol></li></ol> <p>I. Maintain Unit Activity Log/ ICS 214</p>	<p>Illustrate travel from one zone to the next using the Control Zone Layout Diagram</p>
---	--



# INCIDENT COMMAND SYSTEM

Hazardous Materials

LESSON ICS-361-6  
Hazardous Materials  
Refuge Area Manager

<ol style="list-style-type: none"><li>1. Record significant events or action taken</li><li>2. Submit the form to the<ol style="list-style-type: none"><li>a) Documentation Unit<ol style="list-style-type: none"><li>(1) Through the Site Access Control Leader</li></ol></li></ol></li></ol>	ICS Form 214
---	--------------

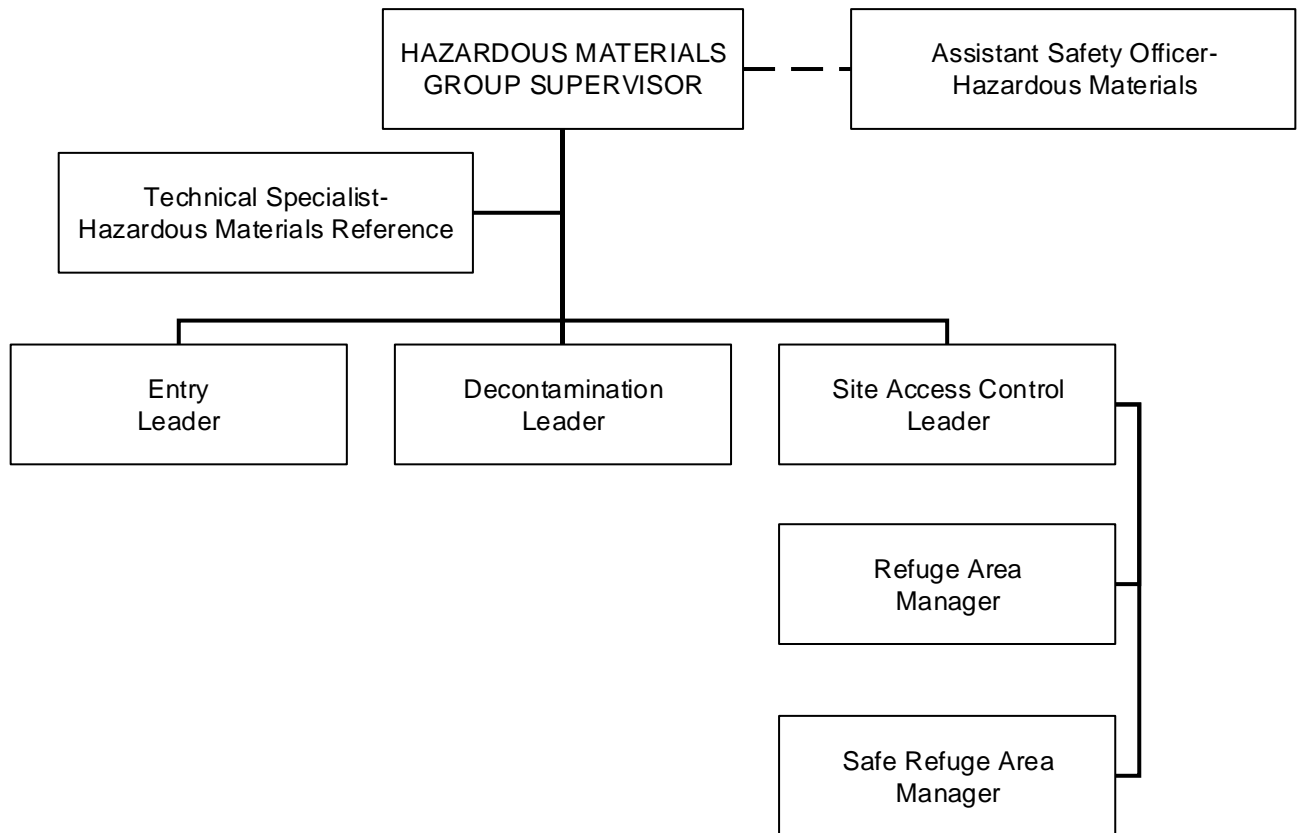


# INCIDENT COMMAND SYSTEM

Hazardous Materials

LESSON ICS-361-6  
Hazardous Materials  
Refuge Area Manager

## Hazardous Materials Group Organization



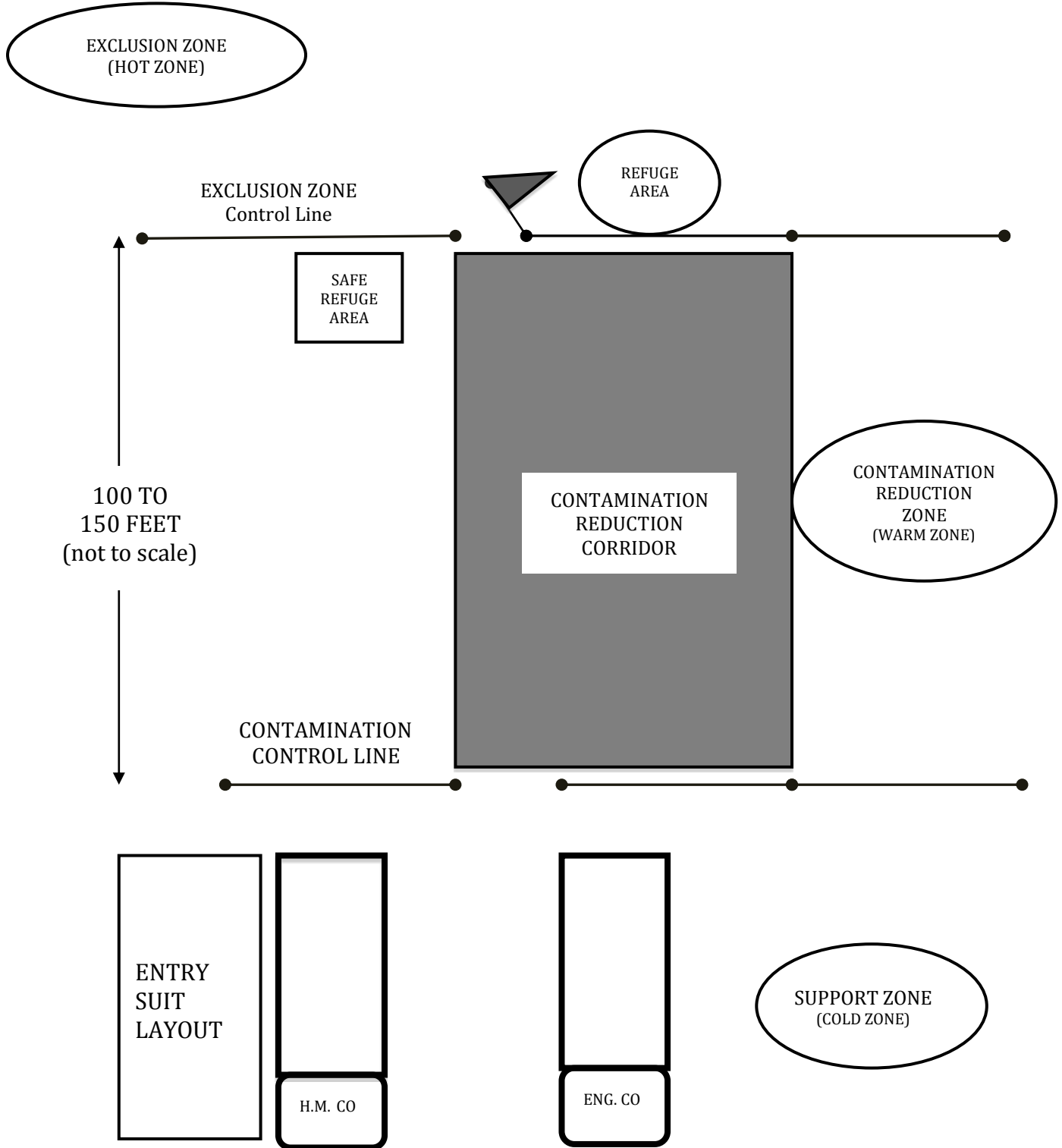


# INCIDENT COMMAND SYSTEM

Hazardous Materials

LESSON ICS-361-6  
Hazardous Materials  
Refuge Area Manager

## CONTROL ZONE LAYOUT





# INCIDENT COMMAND SYSTEM

Hazardous Materials

LESSON ICS-361-6  
Hazardous Materials  
Refuge Area Manager

---

## *SUMMARY:*

The position description and checklist just covered is the minimum consideration for the position of Hazardous Materials Refuge Area Manager. The most important on is to establish communications and coordination with the various leader positions that you will be interfacing. The evaluation of victims (triaging) and gathering of information from the victims is very important to this position.

## ***EVALUATION:***

Give student quiz ICS 361-6

## *ASSIGNMENT:*

Read pages 1-6 of the Hazardous Materials Refuge Area Manager Position Manual (ICS 1106)





# INCIDENT COMMAND SYSTEM

Hazardous Materials

LESSON ICS-361-6  
Hazardous Materials  
Refuge Area Manager

## Incident Command System Hazardous Materials Module ICS 361-6 Quiz

Name: \_\_\_\_\_  
\_\_\_\_\_

Date: \_\_\_\_\_

### Hazardous Materials Refuge Area Manager

Instructions: This is a multiple choice quiz. For each of the following questions or statements, mark the letter preceding the one best answer.

Example: Methods and operating procedures which reduce fire, water and smoke damage during and after fire are called:

- A. Overhaul
- B. Ventilation
- C. Extinguishment
- D. Salvage

1. The Refuge Area Manager Reports to:
  - A. The Site Access Control Leader
  - B. Operations Section Chief
  - C. Planning Section Chief
  - D. HM Group Supervisor
2. The Refuge Area Manager is assigned to:
  - A. Entry Leader
  - B. Decontamination Leader
  - C. Hazardous Materials Group
  - D. Incident Commander
3. Where is the Refuge Area Located?
  - A. Exclusion Zone
  - B. Support Zone
  - C. Contamination Reduction Zone
  - D. Tepid Zone
4. The general objectives of the Refuge Area Manager position includes all of the following except:
  - A. Documenting the decontamination teams' "on air time"
  - B. Preventing the spread of contamination
  - C. Prioritizing victims for treatment
  - D. Collecting information from victims
5. The Refuge Area Manager must coordinate activities with:
  - A. Decontamination Leader
  - B. Entry Leader
  - C. Site Access Control Leader



# INCIDENT COMMAND SYSTEM

Hazardous Materials

LESSON ICS-361-6  
Hazardous Materials  
Refuge Area Manager

---

- D. All of the above
6. The Refuge Area Manager will request additional resources through:
- A. The Site Access Control Leader
  - B. State Warning Center
  - C. Logistics Section Chief
  - D. Planning Section Chief
7. The Refuge Area Manager should relay pertinent information received from victims through the Site Access Control Leader to the:
- A. Incident Commander
  - B. Planning Section Chief
  - C. Local Media for immediate broadcast
  - D. HM Group Supervisor
8. By what criteria will the Entry Team triage victims?
- A. Age
  - B. Training and education
  - C. Medical condition and degree of contamination
  - D. All of the above
9. If there is a need for the Refuge Area Manager to enter the Contamination Reduction Zone. What level of personal protection shall be worn?
- A. The Appropriate level
  - B. Level A
  - C. Level B
  - D. Level C
10. Which ICS form must be maintained by the Refuge Area Manager?
- A. ICS Form 211
  - B. ICS Form 214
  - C. ICS Form 202
  - D. ICS Form 1099

Incident Command System Hazardous Materials Module  
**ICS 361-6 Quiz Key**

---



# INCIDENT COMMAND SYSTEM

Hazardous Materials

LESSON ICS-361-6  
Hazardous Materials  
Refuge Area Manager

---

Name: \_\_\_\_\_  
\_\_\_\_\_

Date: \_\_\_\_\_

## Hazardous Materials Refuge Area Manager

Instructions: This is a multiple choice quiz. For each of the following questions or statements, mark the letter preceding the one best answer.

Example: Methods and operating procedures which reduce fire, water and smoke damage during and after fire are called:

- E. Overhaul
- F. Ventilation
- G. Extinguishment
- H. Salvage

1. The Refuge Area Manager Reports to:
    - A. The Site Access Control Leader**
    - B. Operations Section Chief
    - C. Planning Section Chief
    - D. HM Group Supervisor
  2. The Refuge Area Manager is assigned to:
    - A. Entry Leader
    - B. Decontamination Leader
    - C. Hazardous Materials Group**
    - D. Incident Commander
  3. Where is the Refuge Area Located?
    - A. Exclusion Zone**
    - B. Support Zone
    - C. Contamination Reduction Zone
    - D. Tepid Zone
  4. The general objectives of the Refuge Area Manager position includes all of the following except:
    - A. Documenting the decontamination teams' "on air time"**
    - B. Preventing the spread of contamination
    - C. Prioritizing victims for treatment
    - D. Collecting information from victims
  5. The Refuge Area Manager must coordinate activities with:
    - A. Decontamination Leader
    - B. Entry Leader
    - C. Site Access Control Leader
    - D. All of the above**
  6. The Refuge Area Manager will request additional resources through:
    - A. The Site Access Control Leader**
-



# INCIDENT COMMAND SYSTEM

Hazardous Materials

LESSON ICS-361-6  
Hazardous Materials  
Refuge Area Manager

---

- B. State Warning Center
  - C. Logistics Section Chief
  - D. Planning Section Chief
7. The Refuge Area Manager should relay pertinent information received from victims through the Site Access Control Leader to the:
- A. Incident Commander
  - B. Planning Section Chief
  - C. Local Media for immediate broadcast
  - D. HM Group Supervisor**
8. By what criteria will the Entry Team triage victims?
- A. Age
  - B. Training and education
  - C. Medical condition and degree of contamination**
  - D. All of the above
9. If there is a need for the Refuge Area Manager to enter the Contamination Reduction Zone. What level of personal protection shall be worn?
- A. The Appropriate level**
  - B. Level A
  - C. Level B
  - D. Level C
10. Which ICS form must be maintained by the Refuge Area Manager?
- A. ICS Form 211
  - B. ICS Form 214**
  - C. ICS Form 202
  - D. ICS Form 1099